

Why is Network Management important?

Ofwat

Proactive network management is a central tenet of PR19

In England and Wales, **3 billion litres of fresh water is lost** to leakage every single day

That's:

22%



England & Wales

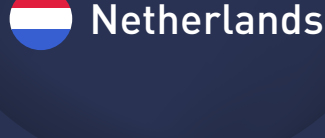
...compared to

3.6%

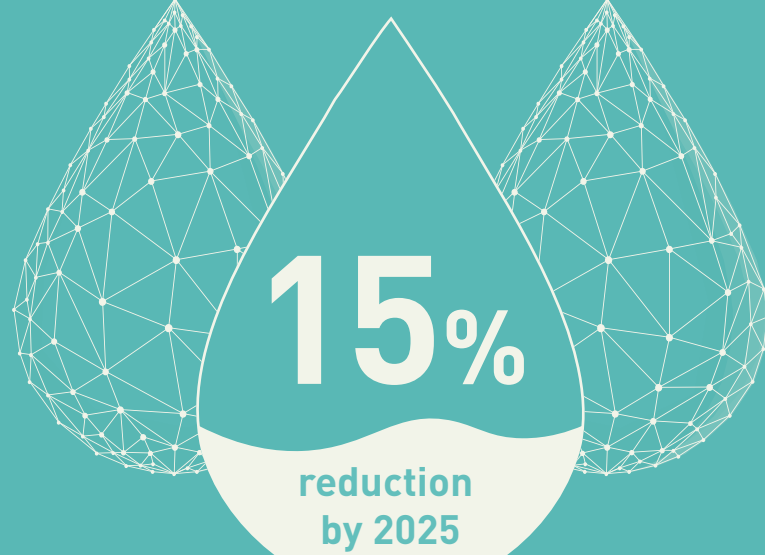


Tokyo

6-7%



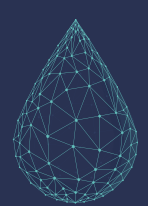
Netherlands



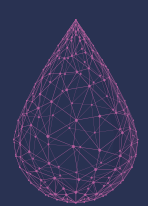
Ofwat has set water companies ambitious targets to reduce leakage by 2025.

To meet these targets, a fresh and holistic approach to data will be needed.

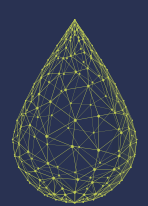
What would better Network Management look like?



Data-driven demand and network modelling



Better oversight and control of leakage across DMAs



Proactive asset management and maintenance

How can Waterfall help?

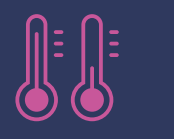
Waterfall works on the principle of Water Event Metering. The device acts as a mini-data logger, transmitting data from every household with a meter installed, on:



PRESSURE



FLOW



TEMPERATURE

Recording every time...



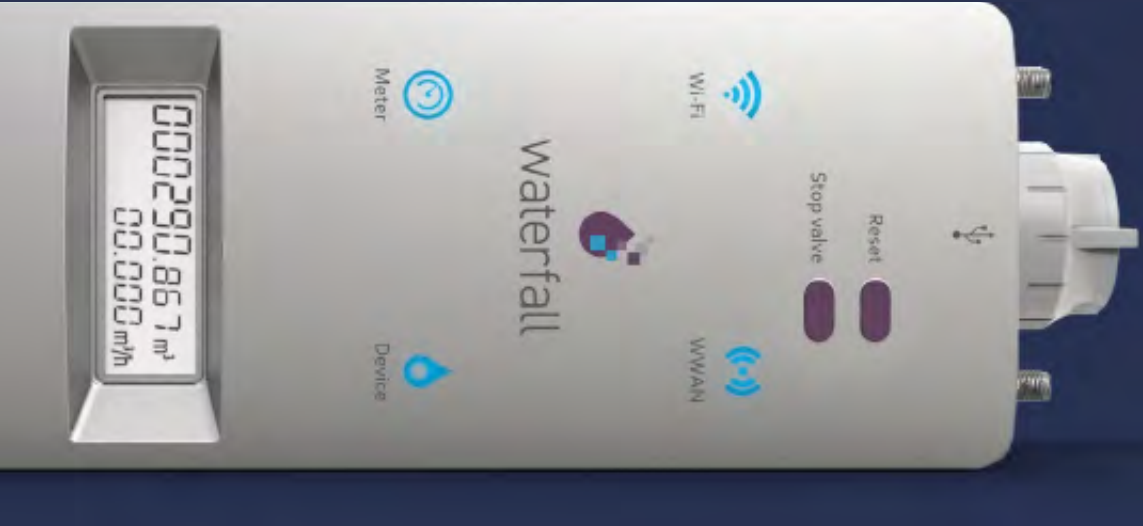
a tap is turned on



a toilet is flushed



a plumbed appliance is used



Unique features



Sensing capabilities



Real-time data



IoT-enabled



Cloud analytics



Powerful AI



Customer-facing app

SMARTER MODELLING

Waterfall supplies more data - and more accurate data - to your network modelling system, so you can:

- Optimise DMAs and networks for consumer demand
- Predict events, reduce risk, and mitigate event impact and cost
- Meet legal targets for minimum pressure, easily and accurately
- Identify unmetered flow within your network
- Reduce energy and operating costs



SMARTER MAINTENANCE

There are 3 main types of leak, each accounting for around a third of freshwater leakage.



VISIBLE

E.g. burst water main flooding a road

UNSEEN OR HIDDEN

E.g. leaking pipe underground

ON-PREMISE

E.g. dripping tap or constantly running toilet or frozen pipe



Waterfall enables you to:

- Spot sudden pressure drops in near-real-time
- Pinpoint the location of leaks quickly, to within a few metres
- Cut leak repair times by as much as 50%
- Prioritise repair and maintenance work based on knowledge of network weak spots
- Prolong the lifespan of infrastructure, with less strain
- Mitigate the impact and cost of hidden leaks

And, Waterfall can effectively eliminate in-home leaks because:

- Device immediately identifies leaks in the order of millilitres
- Plumber fixes in-home leaks when the device is installed
- App alerts customer to any new issues as they arise
- Ability to shut off water supply in event of burst pipe

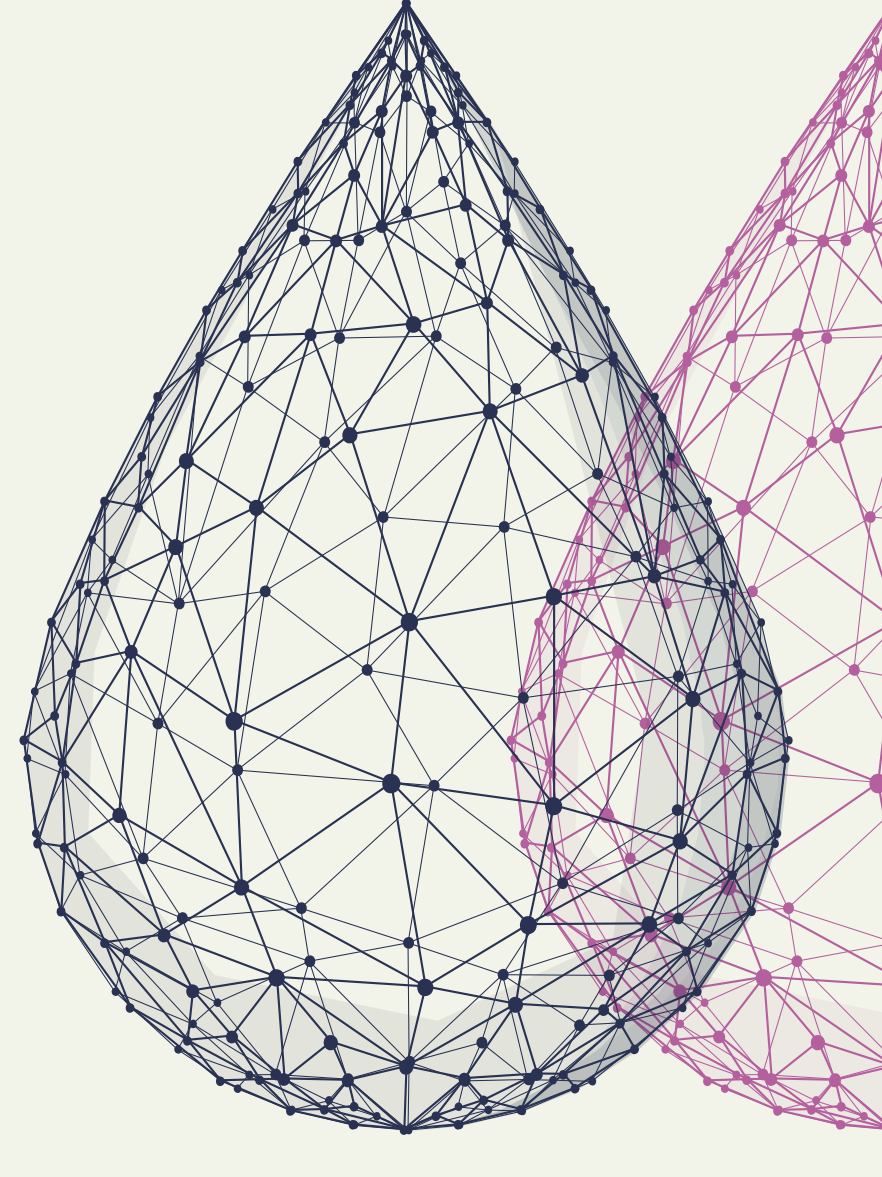
SMARTER SERVICE

WATER COMPANIES

- Better oversight and control
- Reduced leakage
- Lower energy costs
- Lower operating costs
- Better customer engagement

CUSTOMERS

- Fewer interruptions to service
- Optimum water pressure
- More reliable water supply
- Fewer reasons to complain
- Higher satisfaction



DISCOVERY WORKSHOP

The best way to understand what Waterfall can do is to see it in action. Sign up for our one-to-one discovery workshop and meet the design and implementation team, including Steve McCorry, CTO at Creative EC and architect of the Waterfall device.

ARRANGE YOUR WORKSHOP